



# District-wide Facility Needs

*February 2024*

**Presentation is not all-inclusive of the needs.**

What are some examples  
of capital maintenance  
and site work?



# Capital Maintenance

## *High/Middle School*

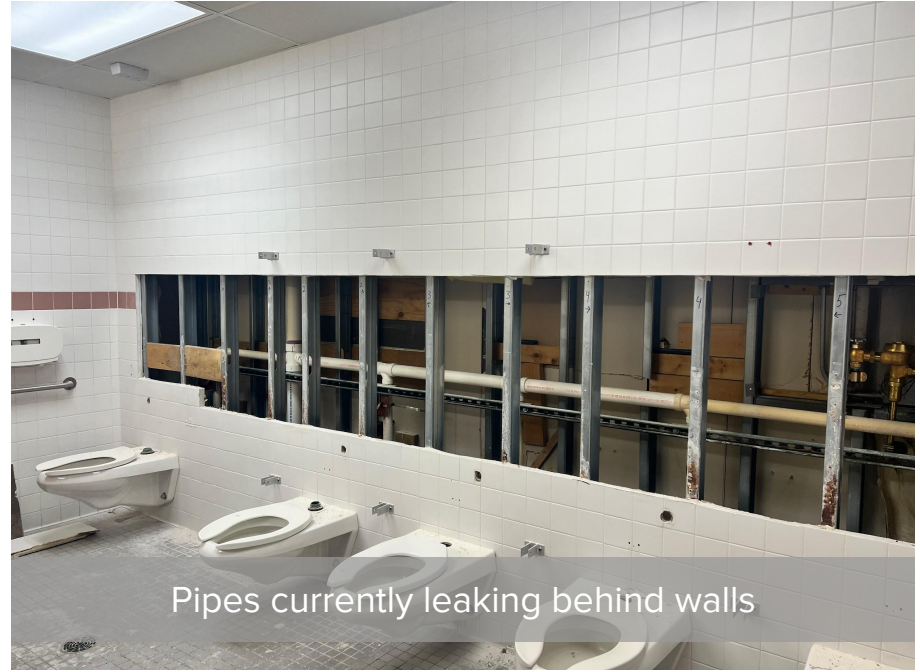


# Capital Maintenance

## High/Middle School



Restrooms currently out of order due to maintenance issues

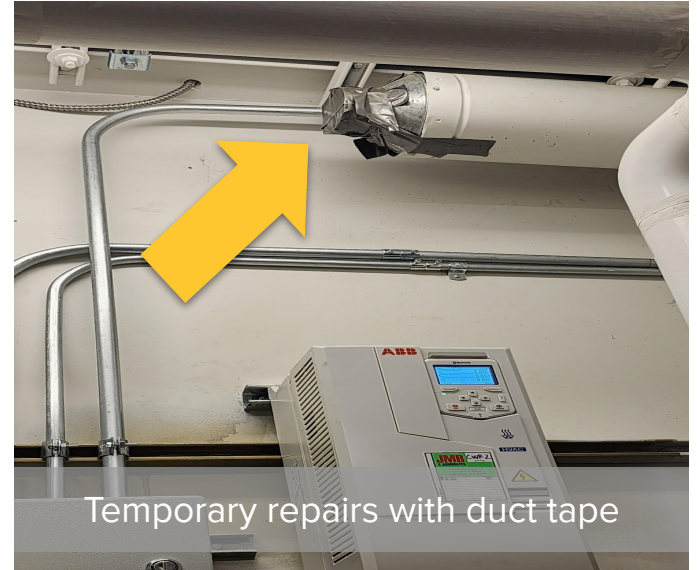


Pipes currently leaking behind walls



# Capital Maintenance

## *Coloma Elementary School*



# Capital Maintenance

## *Westfield Elementary School - Middle School Event Parking*





# Capital Maintenance

## *Westfield Elementary School*





# Capital Maintenance

## *Westfield Elementary School*



# More Information



[www.westfield.k12.wi.us/planning](http://www.westfield.k12.wi.us/planning)

Stay Informed!



## **Michelle Johnson, District Administrator**

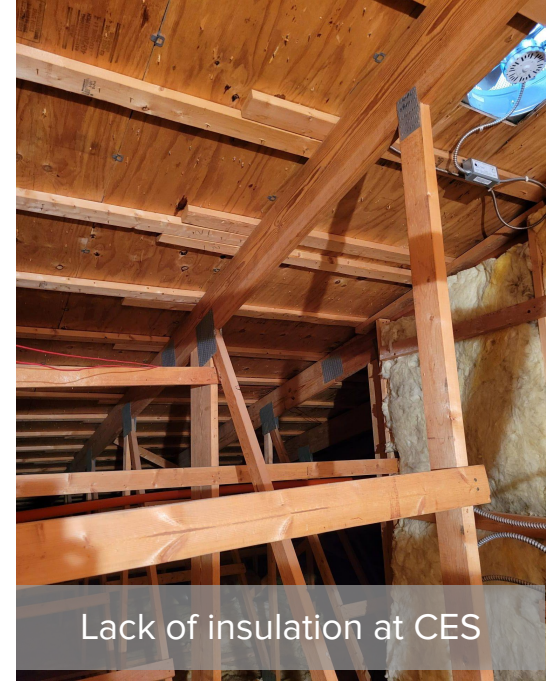
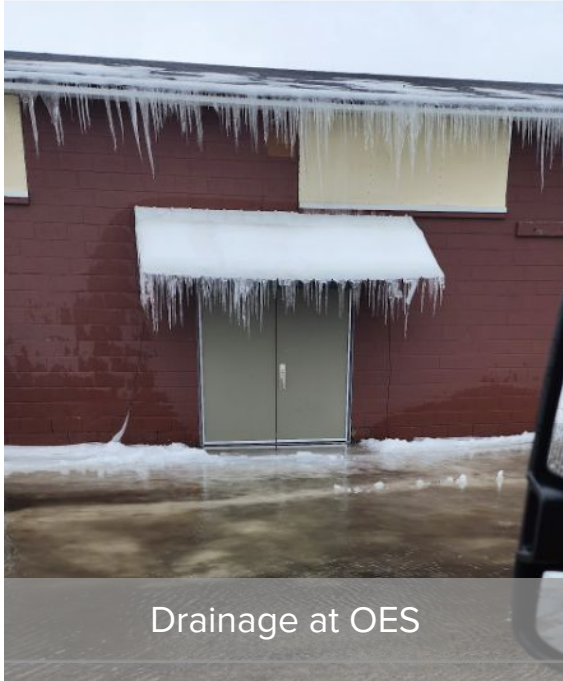
michelle.johnson@westfieldpioneers.org  
(608) 296-2141 ext. 1011

## **Veronica “Roni” VanDerhyden, Business Manager**

veronica.vanderhyden@westfieldpioneers.org  
(608) 296-2141 ext. 1006

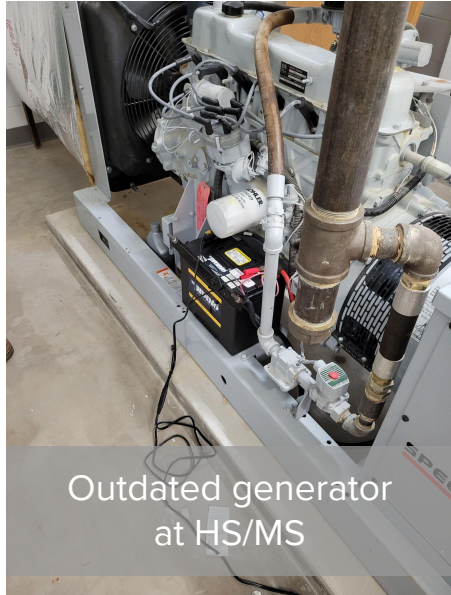
# Capital Maintenance

## *Exterior*

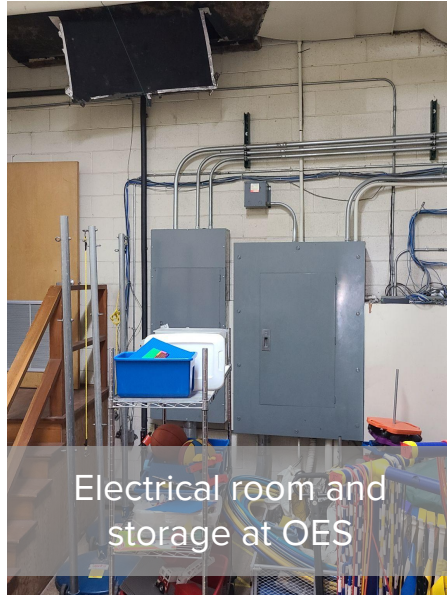




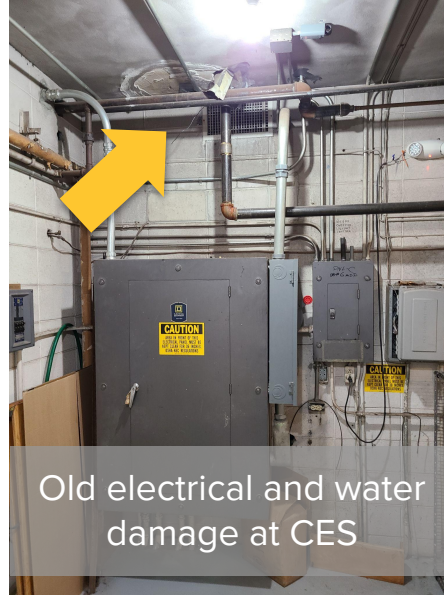
# Capital Maintenance *Systems*



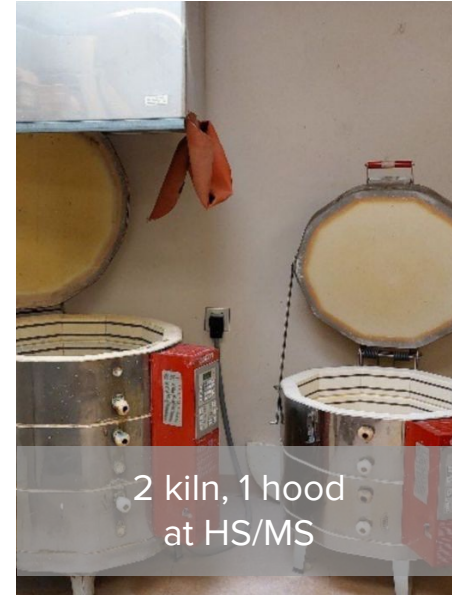
Outdated generator  
at HS/MS



Electrical room and  
storage at OES



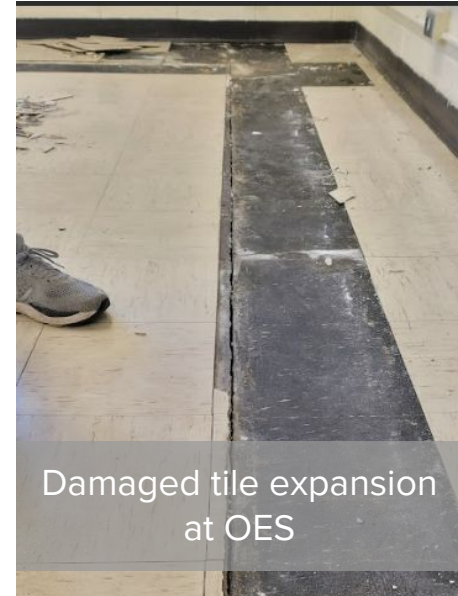
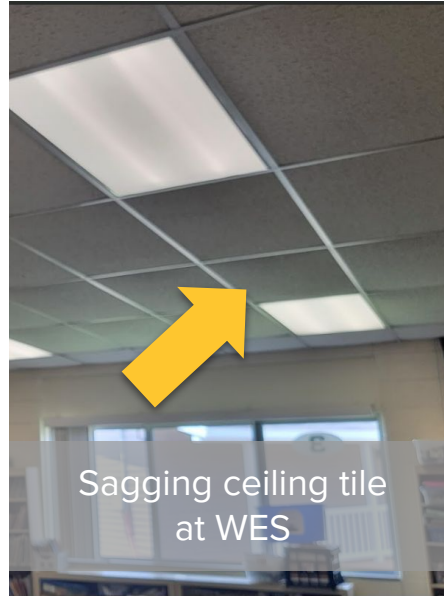
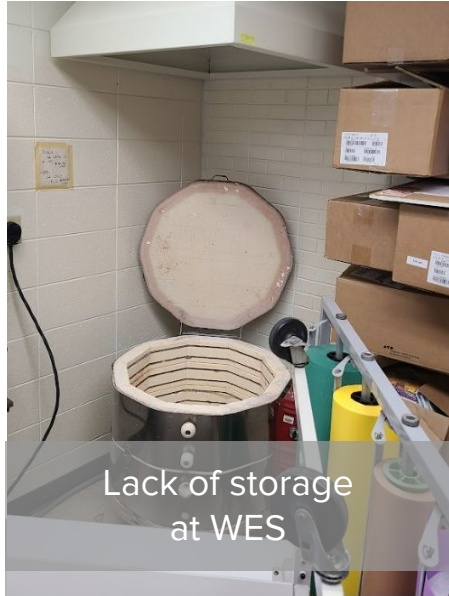
Old electrical and water  
damage at CES



2 kiln, 1 hood  
at HS/MS

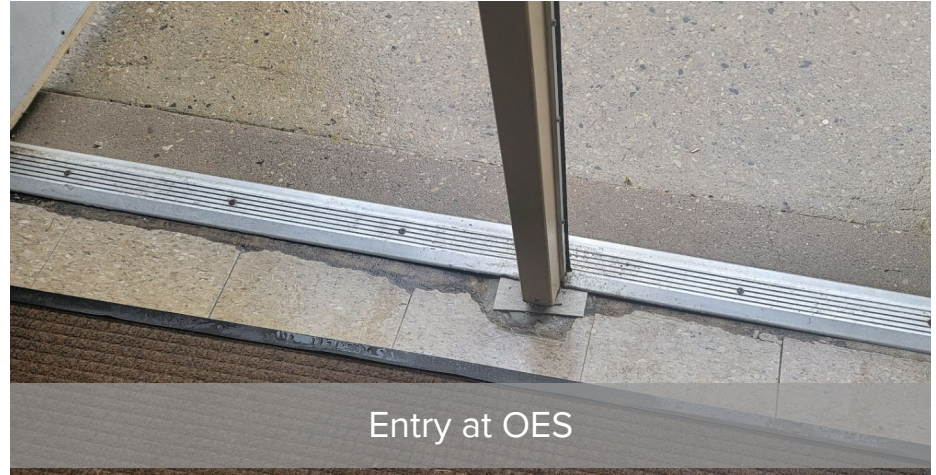
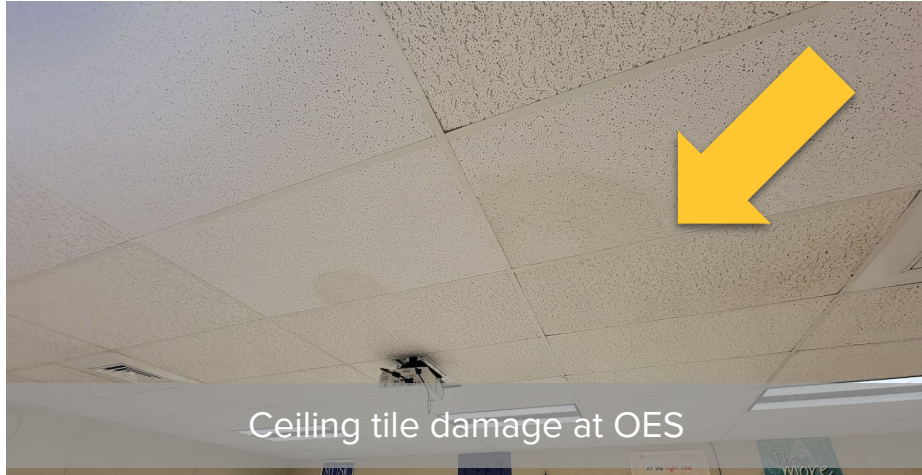
# Capital Maintenance

## *Interiors*



# Capital Maintenance

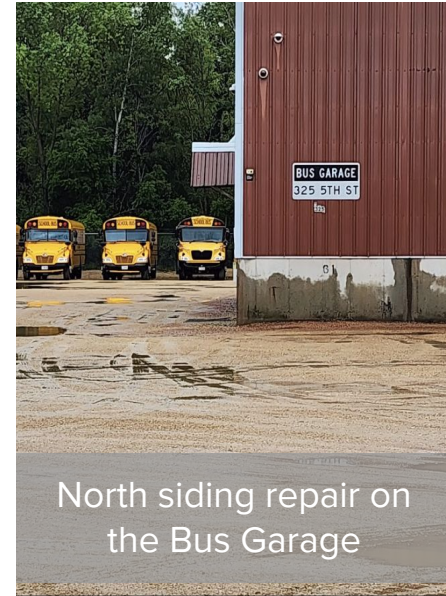
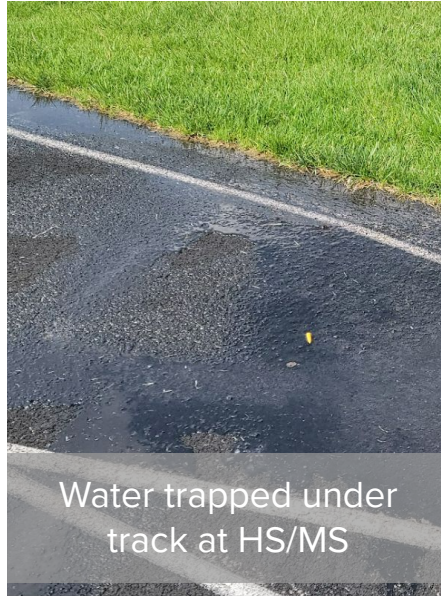
## *Interiors*





# Capital Maintenance

## *Exteriors*



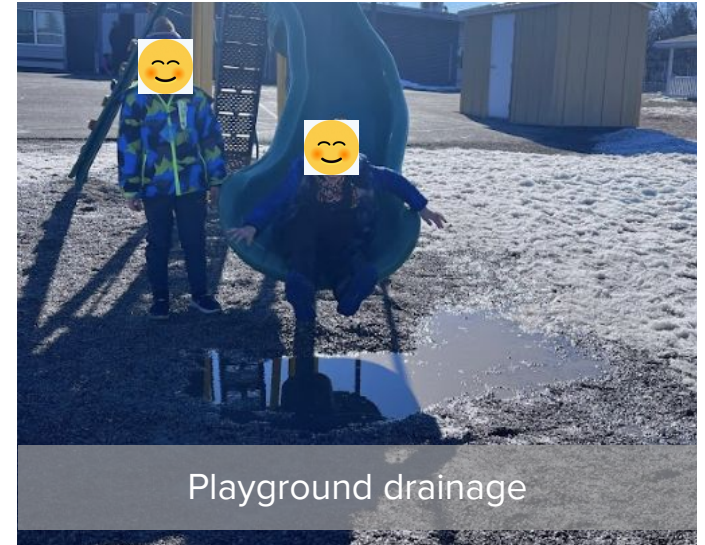
# Capital Maintenance





# Site Work

## *Westfield Elementary School - Playground & Drainage*



# Site Work

## *Westfield Elementary School - Playground & Drainage*





# Site Work

## *Westfield Elementary School - Playground & Drainage*





# More Information



[www.westfield.k12.wi.us/planning](http://www.westfield.k12.wi.us/planning)

Stay Informed!



## **Michelle Johnson, District Administrator**

michelle.johnson@westfieldpioneers.org  
(608) 296-2141 ext. 1011

## **Veronica “Roni” VanDerhyden, Business Manager**

veronica.vanderhyden@westfieldpioneers.org  
(608) 296-2141 ext. 1006

What are some examples  
of safety & security?

# Safety & Security

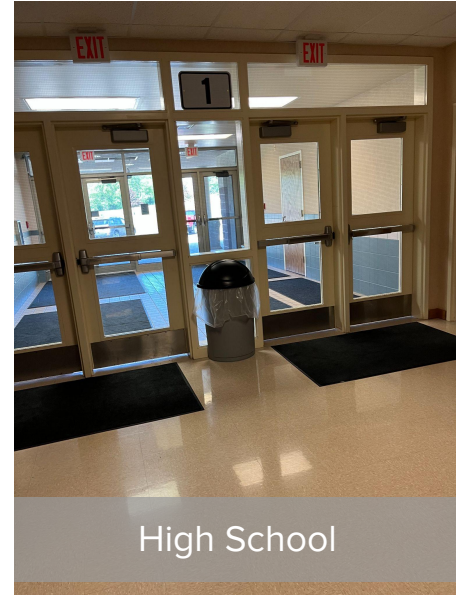
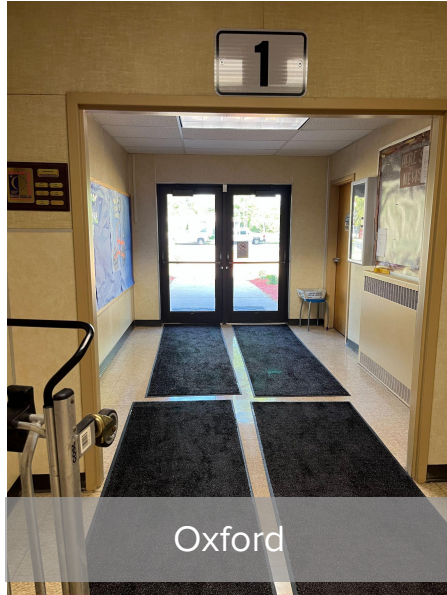
## Technology Infrastructure



*1997 vs. 2024: It isn't the same as when we were in school!*

# Safety & Security

## *Entrances*



# Safety & Security

## *Coloma Elementary School - Non-Secure Entry*



Once inside the doors, visitors have access to the entire building



# Safety & Security

## *Oxford Elementary School - Non-Secure Entry*



Once inside the doors, visitors have access to the entire building

# Safety & Security

## *Westfield Elementary School - Non-Secure Entry*



Once inside the doors, visitors have access to the entire building

# Safety & Security

## *High/Middle School - Non-Secure Entry*



Once inside the doors, visitors have access to the entire building



# Safety & Security

## *Coloma Elementary School - Drop-Off/Pick-Up & Parking*



# Safety & Security

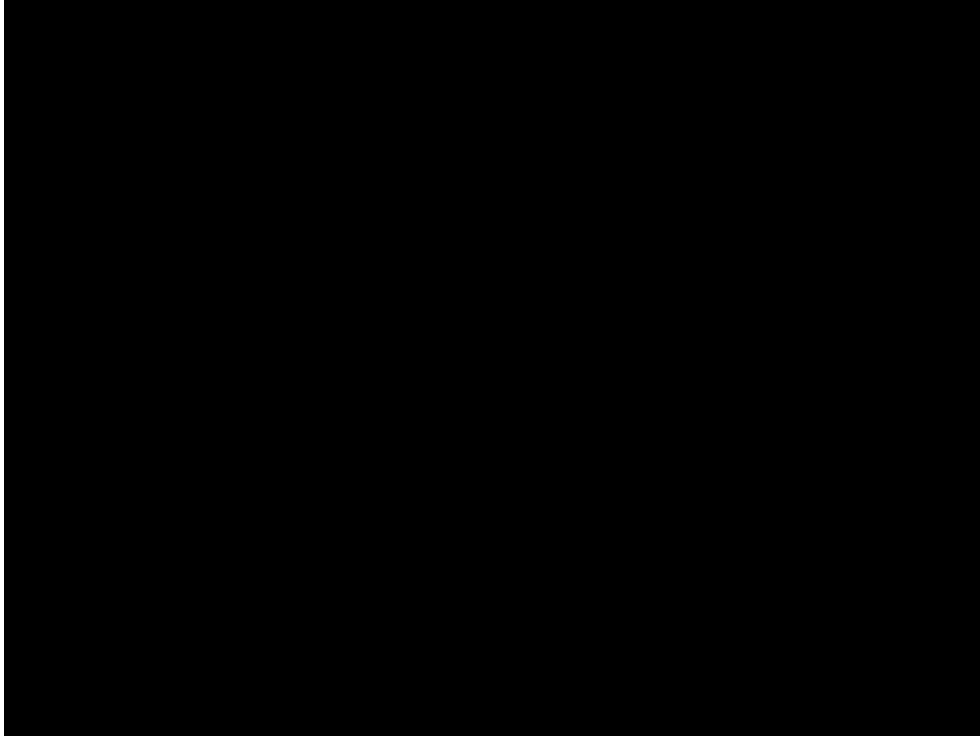
## *Oxford Elementary School - Drop-Off/Pick-Up & Parking*





# Safety & Security

## *Westfield Elementary School - Drop-Off/Pick-Up & Parking*



# Safety & Security

## *High/Middle School - Drop-Off/Pick-Up & Parking*



# More Information



[www.westfield.k12.wi.us/planning](http://www.westfield.k12.wi.us/planning)

Stay Informed!



## **Michelle Johnson, District Administrator**

michelle.johnson@westfieldpioneers.org  
(608) 296-2141 ext. 1011

## **Veronica “Roni” VanDerhyden, Business Manager**

veronica.vanderhyden@westfieldpioneers.org  
(608) 296-2141 ext. 1006

What are some examples  
of space & program?

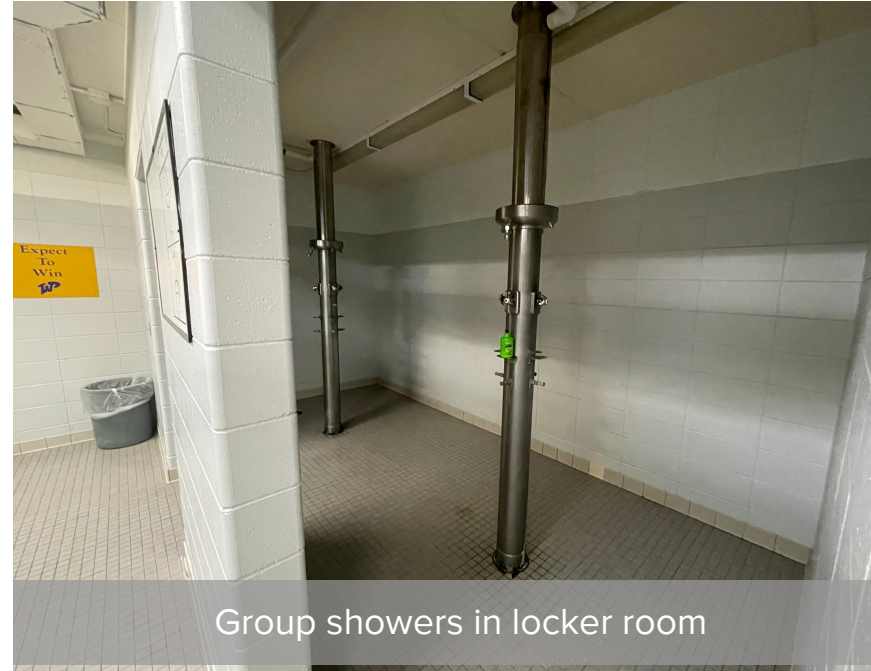


# Space & Program

## High/Middle School - Locker Room



Single toilet in locker room



Group showers in locker room

# Space & Program

## *High/Middle School - Locker Room*



One toilet and group showers



# Space & Program

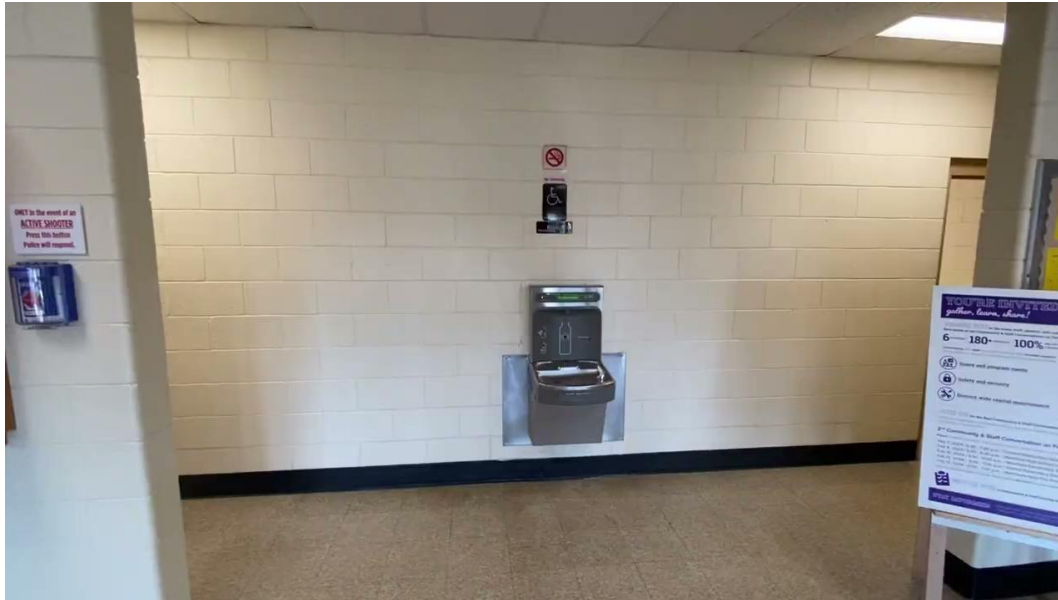
## *High/Middle School - Access to Restrooms*



Distance from choir room to nearest restroom

# Space & Program

## *Coloma Elementary School - Access to Restrooms & Underutilized Space*



Proposed renovation to update toilets

# Space & Program

## *Oxford Elementary School - Locker Room*



Proposed learning space renovation

# Space & Program

## *Oxford Elementary School - Locker Room*



Proposed learning space renovation



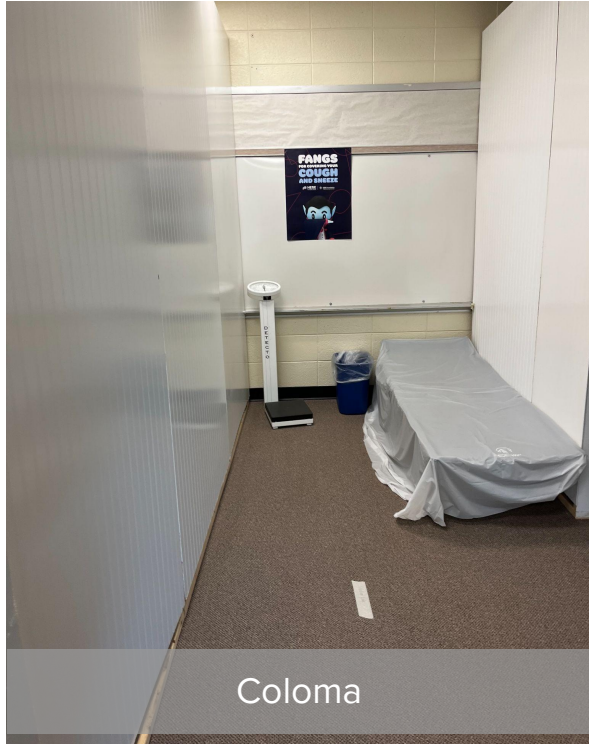
# Space & Program

## *Westfield Elementary School - Meeting Rooms*



# Space & Program

## *Sick/Nurse Rooms*





# More Information



[www.westfield.k12.wi.us/planning](http://www.westfield.k12.wi.us/planning)

Stay Informed!



## **Michelle Johnson, District Administrator**

michelle.johnson@westfieldpioneers.org  
(608) 296-2141 ext. 1011

## **Veronica “Roni” VanDerhyden, Business Manager**

veronica.vanderhyden@westfieldpioneers.org  
(608) 296-2141 ext. 1006

# Space & Program

## *Westfield Elementary School - Undersized Spaces*



Kitchen, cafeteria, physical education, and MS extra-curricular events



# Space & Program

## *Westfield Elementary School*

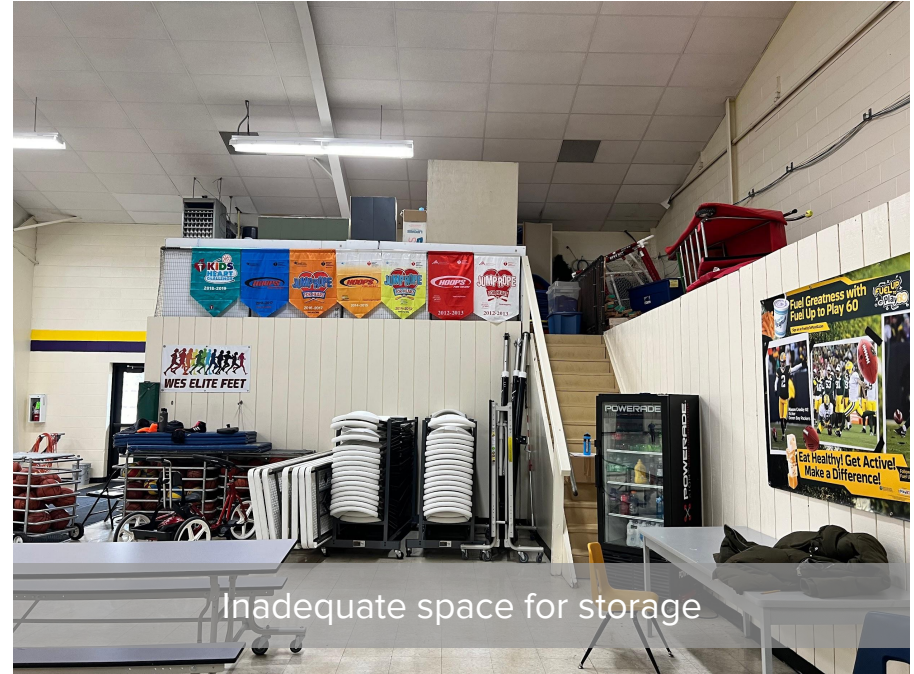


# Space & Program

## *Westfield Elementary School - Gym/Cafeteria*



Lunch in the gym during physical education class



Inadequate space for storage



# Space & Program

## *Westfield Elementary School - Gym/Cafeteria Used for Middle School Athletics*



# Space & Program

## *Westfield Elementary School - Gym/Cafeteria Used for Middle School Athletics*



Concessions



Damaged gym floor

# Space & Program

## *Westfield Elementary School - Middle School Athletics*



No locker rooms available for MS athletics



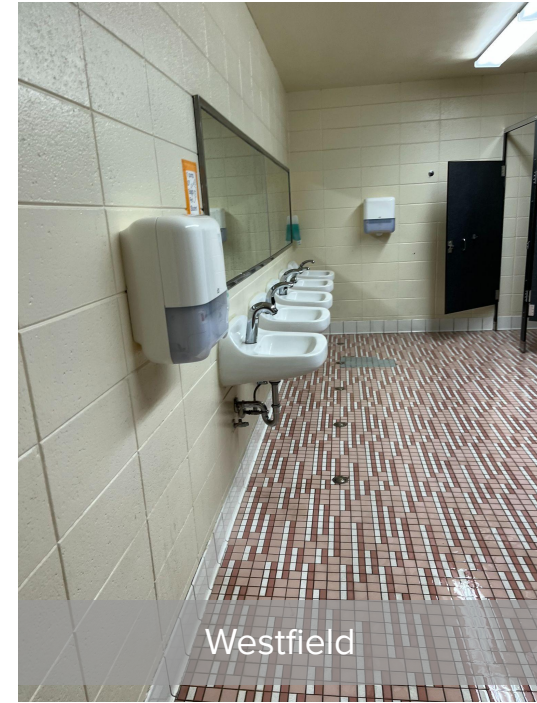
# Space & Program

## *Westfield Elementary School - Middle School Athletics*



# Space & Program

## *Accessibility and Code Deficiencies*



# More Information



[www.westfield.k12.wi.us/planning](http://www.westfield.k12.wi.us/planning)

Stay Informed!



## **Michelle Johnson, District Administrator**

michelle.johnson@westfieldpioneers.org  
(608) 296-2141 ext. 1011

## **Veronica “Roni” VanDerhyden, Business Manager**

veronica.vanderhyden@westfieldpioneers.org  
(608) 296-2141 ext. 1006